

PANEL-PC-W-.....

Quick Installation Guide

SKU/Order No.: SA-P-W-.....

Address of the manufacturer:

SALZ Automation GmbH

Max-Planck-Str. 64

32107 Bad Salzuflen, Germany

Email: support@salz-automation.com



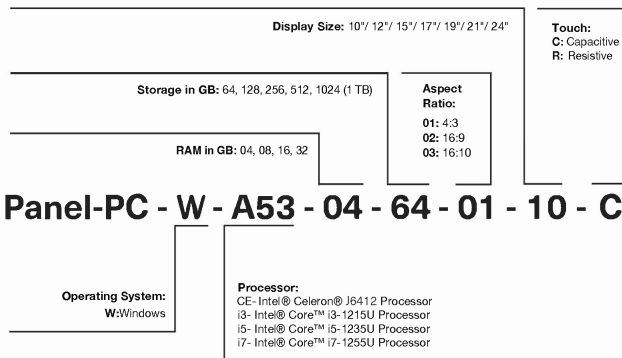
Overview

PANEL-PC-W-..... is an industrial panel pc with a TFT LCD touchscreen, Power Supply 24V DC, Win11 Professional, Win11 IoT, or Win11 Enterprise LTSC OS, IP65 compact fanless housing, Wi-fi etc.

Package Content:

- Industrial Panel PC
- Power adapter x1
- Power connection cable x1
- Installation accessories x1
- Quick Installation Guide x1

1. Nomenclature



Legend of Configuration for the PANEL-PC-W-.....:

No.	Component	Description
1	Power Terminal	Coaxial power connector (5,5 x 2,5 mm): 12 ... 36 VDC Screw terminal: 12 ... 36 VDC
2	RJ45 Ethernet	1x RJ-45 Gigabit Ethernet (2 in Windows PC)
3	HDMI	Digital interface for a monitor with audio output.
4	Chassis Ground	Screw to fix the shielding ground connection.
5	SIM / SD Card	1xSIM card slot, 1xTF/SD card slot
6	Power Button	Button for PC power function.
7	Audio	1x3.5mm Audio output interface
8	Serial Ports	1x RS-232 DB-9
9	USB Ports	(A/L)- 1x USB 3.0 Typ A, 1x USB 2.0 (USB/OTG) (W)- 2x USB 3.0 Typ A, 2x USB 2.0 (USB/OTG)
10	Phoenix Plug	12 Pin-Screw Connector: 1x RS-485, 1x RS-232, 5x GPIO
11	Bluetooth	1x Bluetooth 5.0
12	VGA	1x VGA (only in W)

2. Wiring Power Input

The PANEL-PC-W-..... offers two options for power supply:

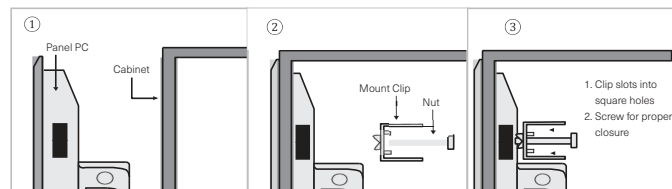
- 12-pin terminal block for 12–36 VDC:
 - Connect the "+" wire from your DC power source to the "12–36V" input on the terminal block, and the "-" wire to the "GND" input.
 - To avoid potential differences and possible damage to the USB ports, never connect the Panel PC to multiple devices with different ground potentials.
- Coaxial socket for 12–36 VDC via external power adapter:
 - For connection to 230 VAC mains, use the external power adapter available as an accessory. Only use the recommended power adapter. This is not included in the standard delivery.

Caution:
Never use both power connections at the same time. Doing so may cause damage to the device.

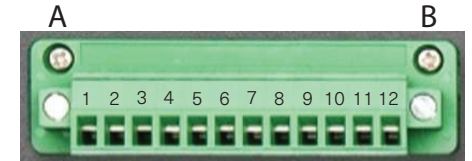
3. Panel Mounting

Panel PCs can be mounted using standard **VESA** mounts (100 x 100 mm and/or 75 x 75 mm), options also include wall mounting, desktop mounting, open frame, cantilever, or DIN rail installation.

Standard cabinet mounting clips are included in the packet:



4. 12-pin Terminal Block



Pin	Description
1	12–36 V DC (Power Supply)
2	GND (Power Supply)
3	GND
4	RS232 TX
5	RS232 RX
6	RS485 A
7	RS485 B
8	IO0 (TTL)
9	IO1 (TTL)
10	IO2 (TTL)
11	IO3 (TTL)
12	IO4 (TTL)

The 12-pin terminal block serves as a versatile interface for both power and signal connections in industrial automation devices. It accommodates power input (12–36 V DC), provides ground connections, and supports serial communication via RS232 and RS485 protocols. Additionally, it offers five digital input/output (IO) channels operating at TTL levels, making it suitable for connecting sensors, actuators, or other control elements in embedded or industrial systems.

NOTE:

Tightening torque for the screws 'A' and 'B' as mentioned in the image above should be **0.3 Nm**

For further support and questions, contact us:

Email: support@salz-automation.com
Phone no.: +49 5222 93 53 5-00