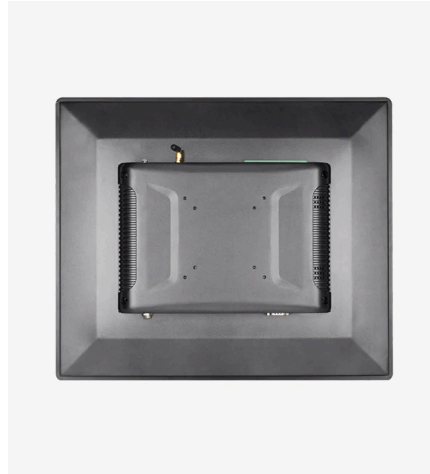


Panel-PC-L-A55-08-64-01-...-

Linux Panel PC (4:3) with 8GB DDR4 RAM

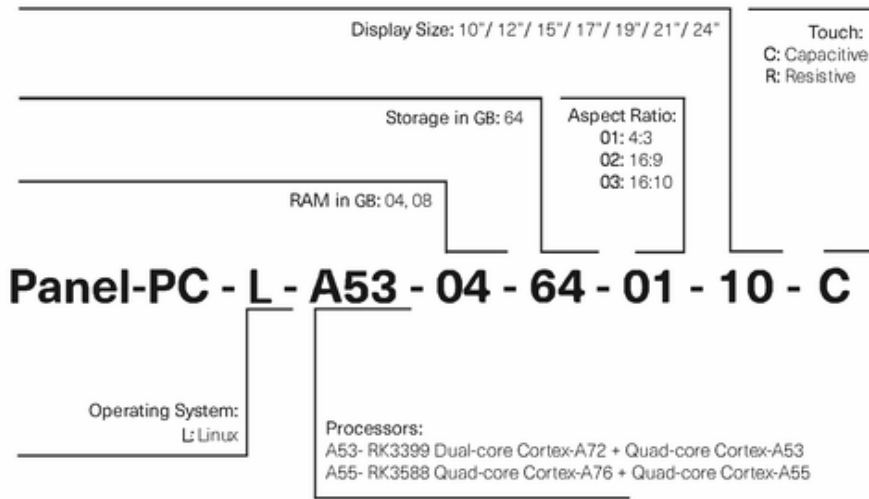


Panel-PC-L-A55-08-64-01-00-00 is a Linux industrial panel pc with a capacitive 4:3 TFT LCD touchscreen and pre-installed Automation Browser. Power Supply 24V DC.

The Panel PC with a 4:3 aspect ratio, comes with a pre-installed Automation Browser and is designed to seamlessly connect controllers with their web server (e.g., CODESYS V3 web server). The setup and operation of the web browser are intuitive and straightforward. Equipped with integrated WiFi and Bluetooth interfaces, this device supports a wide range of applications. Its front panel is IP65-rated, and the aluminum housing provides a compact, robust design. The projected capacitive touch enables multi-touch functionality for smooth user interaction.

This 24V DC Panel PC series is powered by a high-performance Rockchip RK3588 Quad-core Cortex-A76 + Quad-core Cortex-A55 architecture, along with an ARM Mali-T860 MP4 GPU for enhanced graphical performance. It includes 8GB RAM and 64GB eMMC storage, ensuring responsive and efficient operation. Connectivity options include onboard Wi-Fi, USB-OTG, TF/SIM, LAN, COM, Audio I/O, HDMI, and a 2-pin connector for power supply.

The WebPanels are available in display sizes ranging from 10" to 24", with the option of projected capacitive touch, offering versatility for various industrial and commercial applications. For more details on how to specify and order the exact product configuration, please refer to the naming convention image provided below.



ORDER DETAILS

Function: TFT LCD WebPanel, 24V DC power supply, Debian11, IP65 compact fanless housing, processor: Rockchip RK3588 Quad-core Cortex-A76 + Quad-core Cortex-A55 1.4GHz, Wi-fi
SKU/Order No.: SA-P-L-A55-08-64-01-...



Technical Data

Certification

Certification	UL, CE, FCC Class A
---------------	---------------------

Ambient Condition

Operating Humidity (non-condensing)	10 ... 80%
Storage Humidity (non-condensing)	10 ... 80%
Ambient Temperature (storage/transport)	-20 ... 75°C
Ambient Temperature (operating)	-10 ... 60°C

Mechanical Data

Housing	Aluminum alloy
Bezel Thickness	3mm

Standards and Regulations

In Compliance With	IP65
--------------------	------

Input Data

Power Consumption (max.)	Typical Consumption: 18W, Maximum Consumption: 48W
Ports	Coaxial power connector (5,5 x 2,5 mm): 12 ... 36 VDC, 1xPower SW, 1xSIM card slot, 1xTF/SD card slot, 1xHDMI, Ethernet: 1x 10/100/1000 BaseT(X) RJ45, 1x3.5mm Audio output interface, 1x RS-232 (RS-485/422), 12 Pin-Screw Connector: 1x RS-485, 1x RS-232, 1x CAN, 3x GPIO
Input Voltage Range DC	12 ... 36 V DC
Nominal Operating Voltage	24 V DC

Interface

USB Ports	2x USB 3.0 Typ A
-----------	------------------

Display Features

Aspect Ratio	4:3
Contrast	1000:01:00

Display colors	16.7M (8-bit)
View angle	85/85/85/85 (L/R/U/D)
Luminance	300 ... 1000 nits
Panel Type	Industrial A grade LCD with LED backlight
Response time	5ms
Touch Screen	Default with 10-point capacitive touch
Touch Screen Surface Hardness	7 Mohs
Touch Screen Transparency	90% (±3%)
Assembly	Supports Panel-mount/Wall-embedded/Wall-mounted/Desktop/ Folding mounting/VESA mount/Suspended mounting, etc.

System Hardware

Processor	Rockchip RK3588 Quad-core Cortex-A76 + Quad-core Cortex-A55
OS Support	Debian11
Memory	8GB DDR4 RAM
Storage	Onboard 64GB eMMC NAND Flash

IEEE Standards

IEEE 802-11A	Wi-Fi 2
IEEE 802-11B	Wi-Fi 1
IEEE 802-11G	Wi-Fi 3
IEEE 802.11N	Wi-Fi 4
IEEE 802.15	Bluetooth 5.2
IEEE 802-11AC	Wi-Fi 5
IEEE 802-11AX	Wi-Fi 6

Commercial Data

Customs Tariff Number	84714100
-----------------------	----------